



Operation Manual

Agile Config 2.0



CONTENTS

Chapter 1. Introduction.....	1
Chapter 2. Preparing for configuration.....	1
2.1 Equipment Required	1
2.2 Installing Agile Suite	1
Chapter 3. Generating configuration files	2
3.1 General Config.....	2
3.2 Specific Config	4
3.3 Logo Config and Favicon Config	6
Chapter 4. Upgrading the devices	7
4.1 Topology	7
4.2 Upgrading process	7
Chapter 5. FAQ.....	9

Chapter 1. Introduction

Agile Config is a function that simplifies WISP customization process, it can be used to customize the default configurations of devices in batches. Flexible settings include logo, WAN connection type, SSID, password, time zone, language, and so on.

Agile Config consists of four major modules—General Config, Specific Config, Logo Config and Favicon Config. General Config is used to upgrading the common configurations of devices with same HW&SW version to the format required by WISP. Specific Config is used to set specific configurations for each device according to its MAC address. Logo Config and Favicon Config are used to change the ISP logo and Favicon as you want.

You can learn how to use Agile Config function from this file, and feel freely to contact us if you have any problems.

Chapter 2. Preparing for configuration

Before all the configuration work begins, you need to prepare the equipment and install “Agile Suite” software.

2.1 Equipment Required

- Hardware required: one PC, one switch and one router (or device) which supports Agile Config function.
- Supported operating systems: Windows 7/ Windows 10 (NET Framework 3.5 or later needed).
- Software required: Excel 2007 or later; Agile Config 2.0 Suite.

2.2 Installing Agile Suite

You will receive Agile Suite which contains the items below:

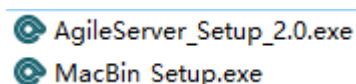


Figure 2-1

🔑 **Note:** The password of this two installers is “Tplinkonly1”.

- 1) Install **AgileServer_Setup_2.0.exe** according to the guideline, you will get the **AgileServer**.

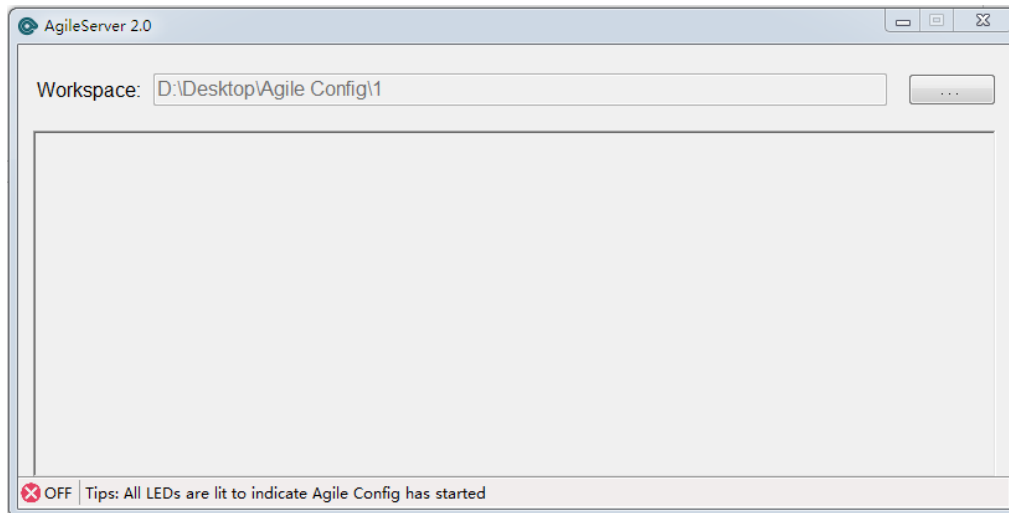


Figure 2-2

- 2) Install **MacBin_Setup.exe** according to the guidelines, and you will get the **MacBin**.

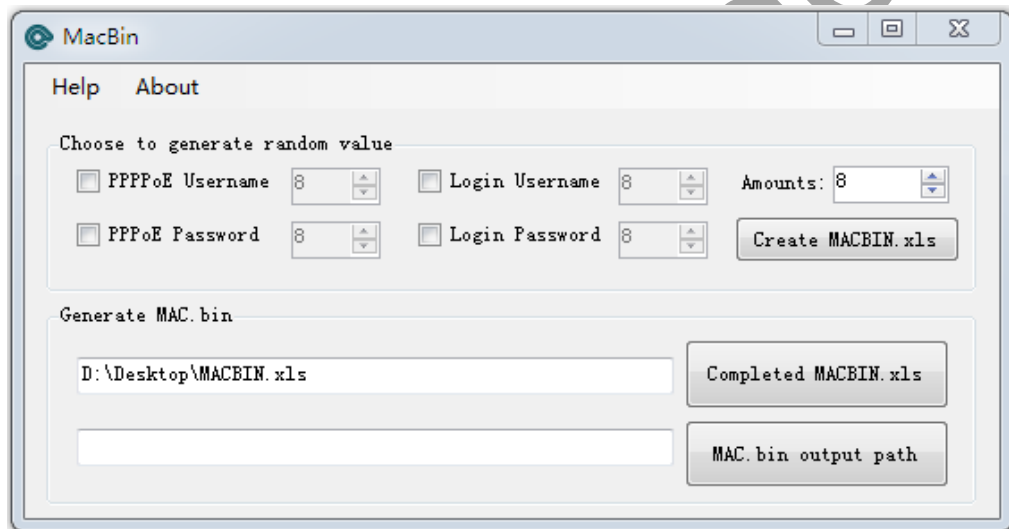


Figure 2-3

Chapter 3. Generating configuration files

3.1 General Config

General Config is available for multiple devices with the same software, for General Config, you need a standard prototype.

1. Plug the PC to the LAN port of the standard prototype via an Ethernet cable, and login the web management page.

Note:

- a) The IP address of your PC should be obtained automatically here.
 - b) Please find the login informations from the label on the bottom of the standard prototype.
2. Set the configuration items as WISP required and save them. All the items you can find on the Web UI are supported to be changed as you want.

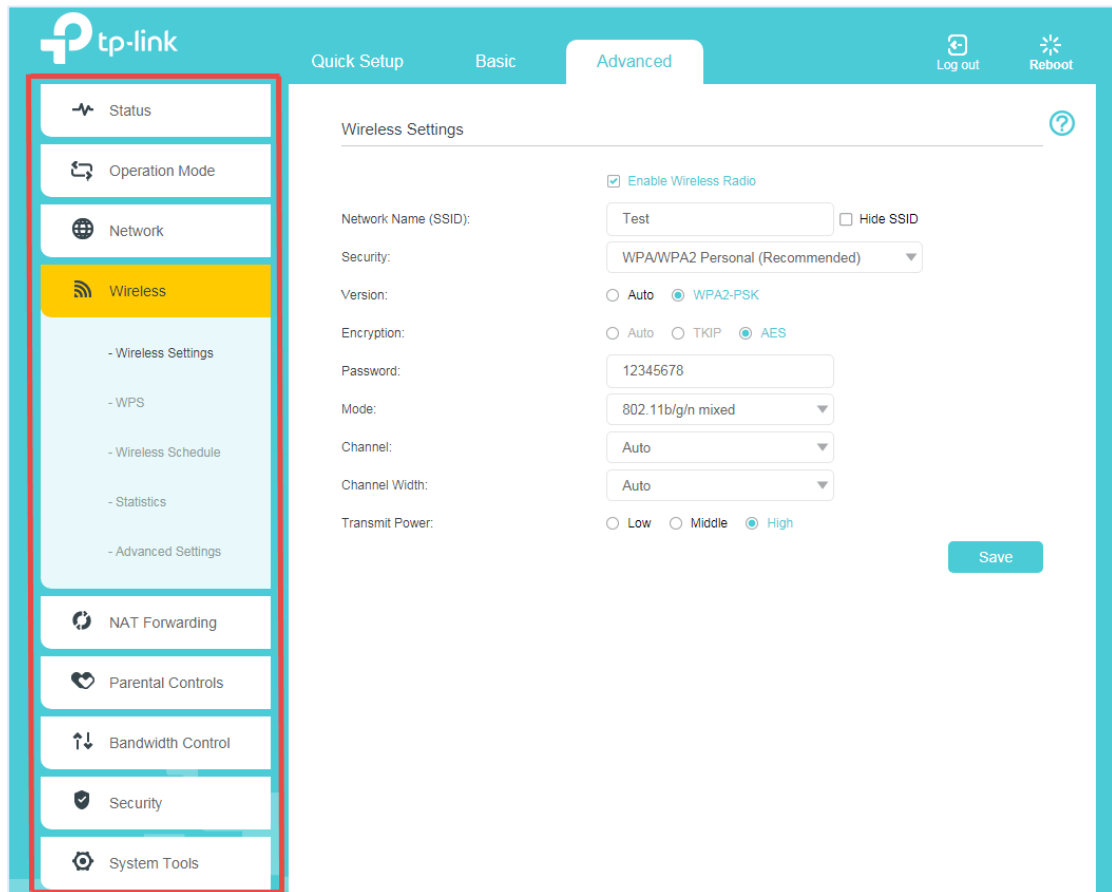


Figure 3-1

3. You can obtain the configuration file in the Backup & Restore page by clicking **“Backup”**. The configuration file will be downloaded right away by the browser, and you can find it in the download path.

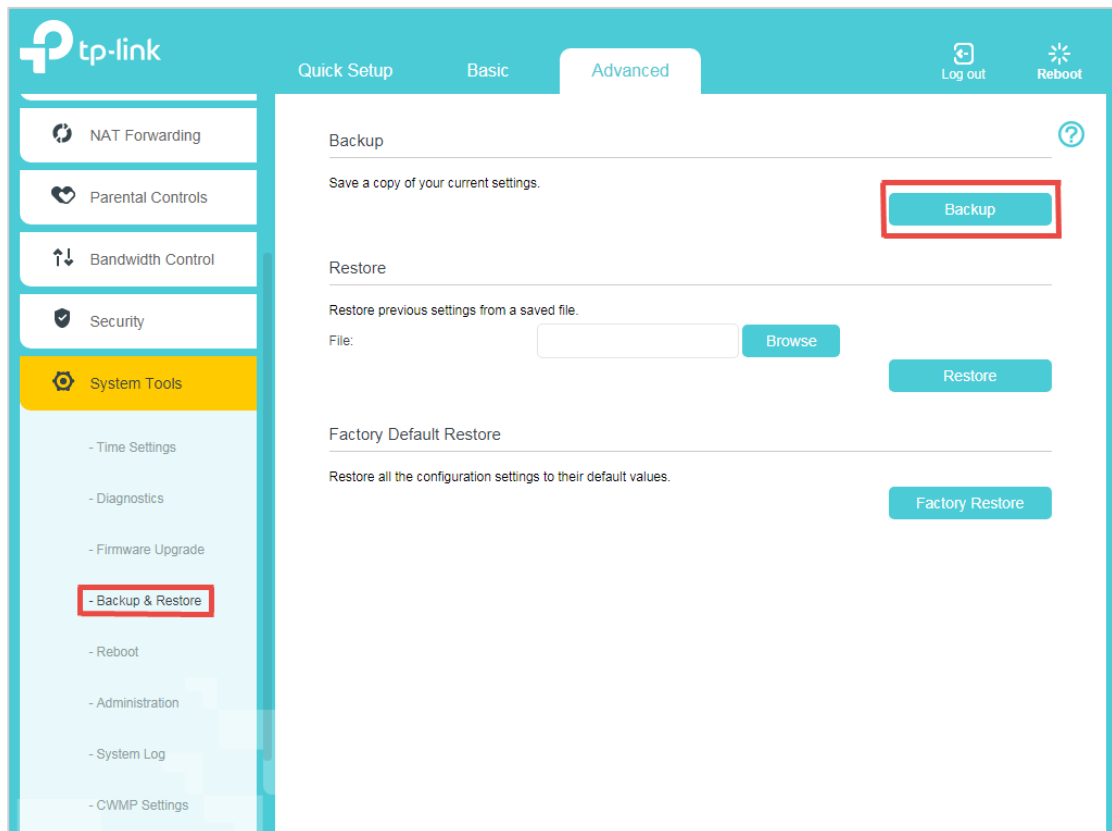


Figure 3-2

Note:

- The exported configuration file is one “xxxxx.bin” file based on model name, usually it is named as “**model+version.bin**”.
- If the backup file is “conf.bin”, that means your device does not support Agile config function.

3.2 Specific Config

Specific Config only supports changing several parameters now, including Network Name (SSID) and Wireless password, the username and password of Web management interface, username and password of PPPoE connection, IP address, subnet mask and gateway address of static IP connection.

Here is a typical example: A WISP bought 100 pcs of our products, and they want to set PPPoE as connection type. Each device have different PPPoE username and password, we can set and record them as default configuration via the tool.

1. Run **MacBin** as administrator.

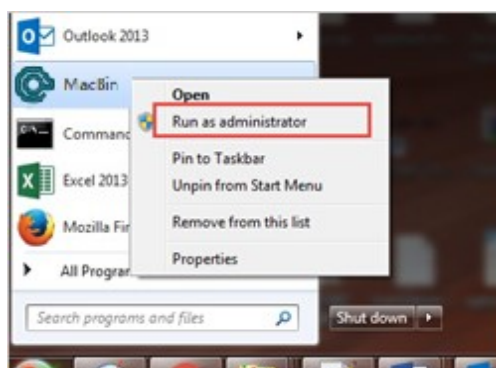


Figure 3-3

2. If you want to obtain random parameters by the tool, click and select the parameters you want. Otherwise, do not select anything and click **“Create MACBIN.xls”**.

We assume that the username and password of PPPoE is composed of 8 bit random characters. Select them and enter a digit such as 8, input the total number of configuration files such as 100. Click **“Create MACBIN.xls”**.

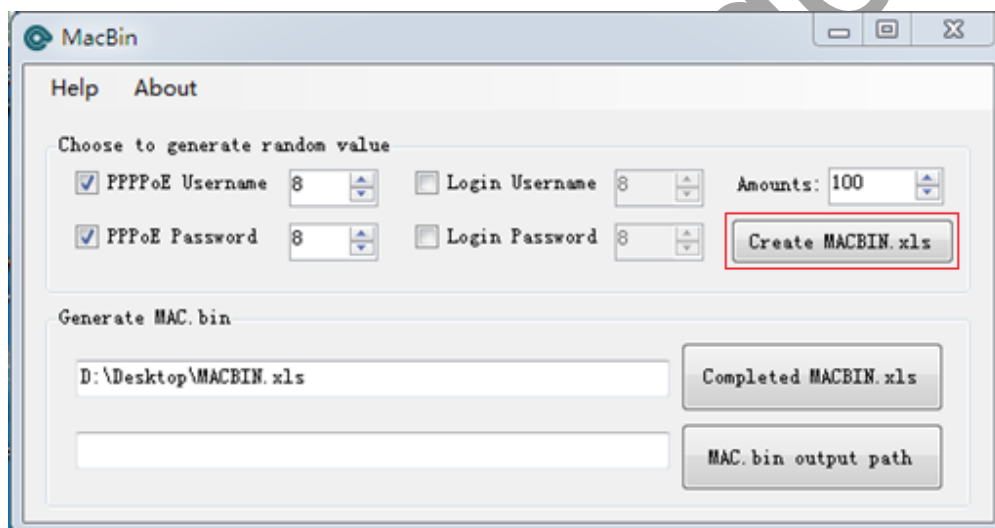


Figure 3-4

3. Open the relevant MACBIN.xls, and input the MAC addresses of the 100pcs devices. You can find the coloums of PPPoE Username and Password was filled out with random values. Save after completion.

MAC Address	Username	Password	WirelessKey	PPPoE Username	PPPoE Password
7C8BCA5718DC				IC1I1vbSXU	bJATK7
7C8BCA5719DC				JaTHXcytXe	SgixcW
7C8BCA5720DC				meXJRgdp9J	H5oOLF
7C8BCA5721DC				hppPUXGL2k	isVD1C
7C8BCA5722DC				r2D7YUE1mz	42rT0s
7C8BCA5723DC				3fGgjd0H2a	VT0YsM
				82AkSvSYpL	3rQ3b2
				tUSf3ntss2	9ROpCE

Figure 3-5

📌 **Note:** You can get the list of MAC address from manufacture.

4. Click the “**Completed MACBIN.xls**” button and select the excel table you just saved, then click and select “**MAC.bin output path**”, the “MAC.bin” file will be automatically produced in the folder you have choose.

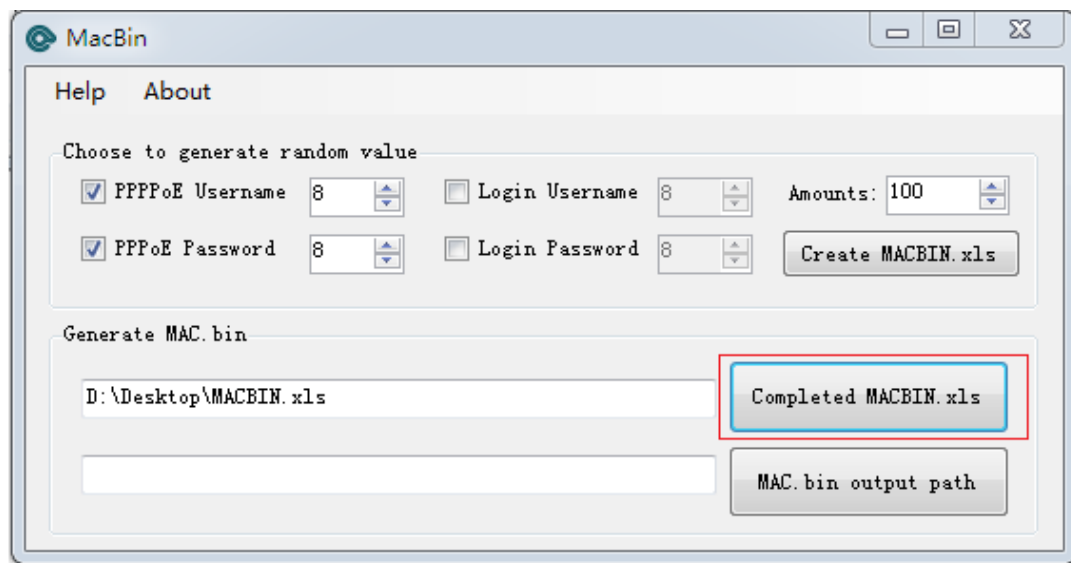


Figure 3-6

Note:

- a) The exported configuration file is one “xxxxx.bin” file based on MAC address, such as “7C8BCA5718DC.bin”. One file for one device.
- b) For PPPoE and Static IP, need to build up one PPPoE or Static IP connection in general config mode first, then can set PPPoE account and static IP parameters in specific config mode.

3.3 Logo Config and Favicon Config

You can change your ISP logo and Favicon by Logo Config and Favicon Config.

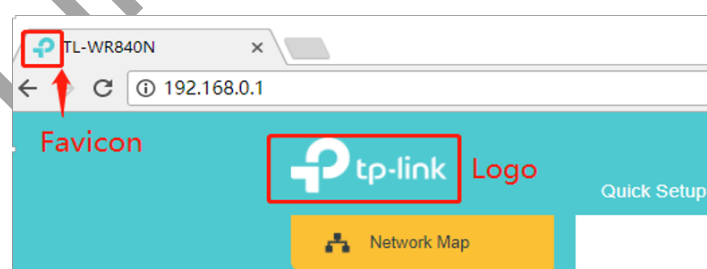


Figure 3-7

Prepare the Favicon and Logo file you want to change. The Logo file must be named as logo-icon.png and the Favicon file must be named as favicon.ico.

Note:

- a) The Favicon and Logo file cannot exceed 6KB.
- b) The size of the Logo image cannot exceed 130*50, a warning will appear if the width exceeds 135 or the length exceeds 55 (The image will still be replaced).

Chapter 4. Upgrading the devices

Create a new folder on the computer, such as D:\TP-Link Agile Config. Import all the configuration files into the folder.

4.1 Topology

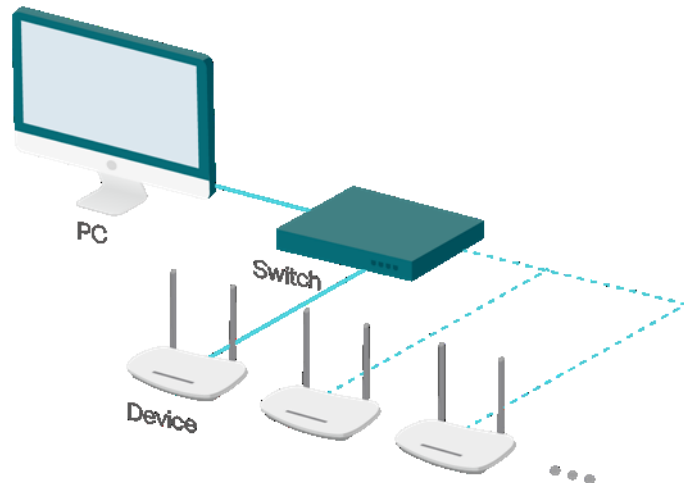


Figure 4-1

Note: Plug the PC to the switch first, then plug the WAN port of the device to the switch, the device will be upgraded automatically.

4.2 Upgrading process

1. IP Address setting

Set the IP address and subnet mask as “192.168.66.10, 255.255.255.0”, and click **Save**.

2. Import the configuration file by clicking the buttons and selecting the files.

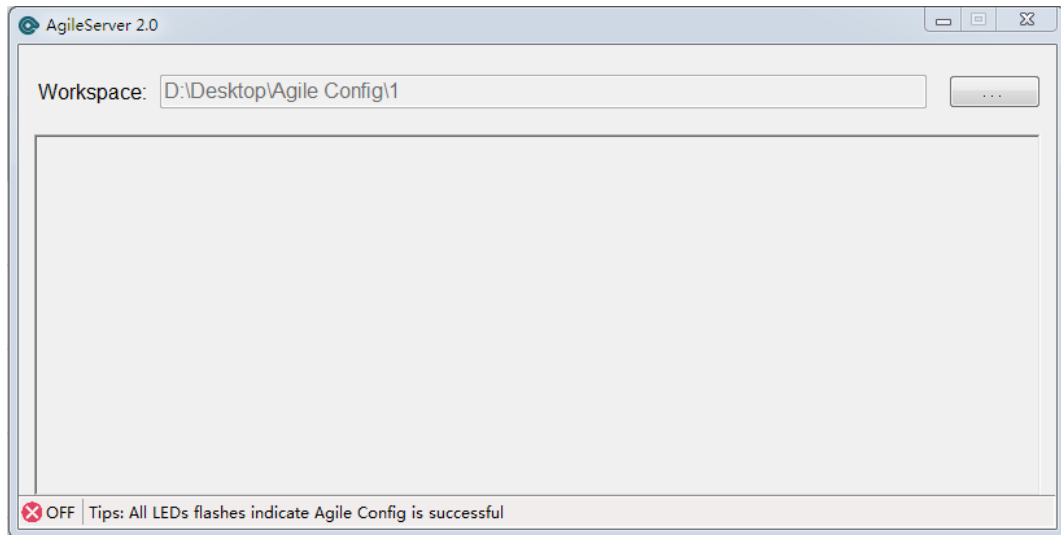


Figure 4-2

3. Plug the WAN port of the device to the switch, power the device on, the device will be upgraded automatically. It supports upgrading the devices in batches, according to amount of the ports on switch.

☛ **Note: The Server is effective only for devices within ten minutes of the boot.**

☛ **Note:**

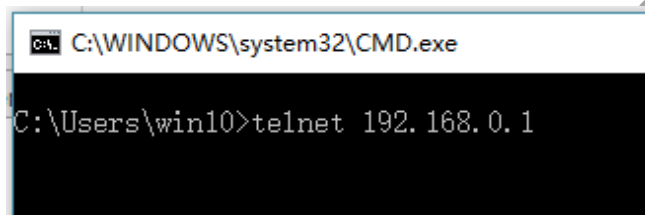
- a) All LEDs are lit to indicate the Agile Config has started.
- b) All LEDs flashes indicate the Agile Config is successful.
- c) All LEDs are off to indicate the Agile Config is failed

Chapter 5. FAQ

1. How to reconfigure a configured device?

Agile Config only works once on each device. If you want to refresh the configurations of a configured device, you need to reset the device to be TP-Link factory configuration by Telnet command and reset button as below:

- a) Power the device on and connect to one PC.
- b) Run a chat cmd.exe on the PC, enter “**telnet 192.168.0.1**”(LAN IP address of the device) to login the device within 10 minutes of the device being powered on.



```
C:\WINDOWS\system32\CMD.exe
C:\Users\win10>telnet 192.168.0.1
```

- c) Enter “**reset**” for password, then the cmd.exe will show “You can reset to TP-Link Config now.”



```
Telnet 192.168.0.1
password:
You can reset to TP-Link Config now.
password: _
```

- d) Press the **reset** button on the device for more than 5s. The device will reboot, once the reset process is completed, the device will have the default TP-Link factory configuration. Then you can configure the device again via Agile Config.

2. How do you configure the device's SSID to be formatted with MAC address?

If the SSID of each device needs to be unique based on their MAC addresses, please set the SSID as “WISP_XXXX_2G” in General Config. Here, XXXX will be replaced with the last N bits of the MAC address (N is the number of Xs you enter). For example, when the MAC address is 8D6C7298D0A and the SSID is set as WISP_XXXX_2G, the new SSID will be WISP_8D0A_2G. If the SSID is WISP_XXXXXX, it will be WISP_298D0A.

3. How to configure the Wireless password of each device to be unique?

Please set the wireless password to be “?undefined?” in General Config, the password of each device will be the same as its PIN after set by Agile Config.